



Bramhall High School

Curriculum Policy

Date of review: November 2020

Date approved by governors:

Date of next review:

Curriculum Intent

At Bramhall High School, we continually strive to improve our curriculum diet for all students. Our focus is to foster the love of learning, ensuring each student is equipped with the knowledge and skills to be successful in future life. Each student embarks on a learning journey, which helps to prepare him or her for the future. This starts with a Year 7 curriculum designed to build upon the experiences in Key Stage 2 through to Year 11 and beyond. We want our students to leave with knowledge and skills which will not only create excellent life opportunities but will also prepare them exceptionally for life beyond school embracing the school's vision of Every Student, Every subject, Every Grade.'

At Bramhall High School, students will:

Experience a broad, deep and knowledge rich curriculum
Have high expectations for behaviour and achievement
Build their character
Develop their cultural, social, moral, mental and physical development.

Students' experience a broad, deep and knowledge rich curriculum at Bramhall High School.

Students experience a broad, deep and knowledge rich curriculum

Our curriculum helps students to achieve high standards and make excellent progress. At KS3, the curriculum is broad and students learn essential knowledge built around a 'learning journey' to ensure they have a deep understanding across a range of subjects. There are many opportunities built into lessons to secure the need to recall and retrieve previous learning so that knowledge is fully embedded.

Many students have a clear idea of subjects they like the most and the least by the middle of Year 9 and offering choice at this stage engages students as partners in their learning and leads to improved outcomes. In Years 10 and 11, the courses are carefully planned to ensure that content is thoroughly understood and this undoubtedly prepares students for external examinations at the end of the course. Secure foundations for progression.

Our Curriculum:

Ensure that the sequence of learning builds on previous knowledge whilst supporting future progression.
Lead to qualifications that are of worth for employers and for entry to further and higher education.
Enable all students to fulfil their potential.
Meet the needs of students of all abilities at the school.
Allow students to acquire an appreciation and respect for their own and other cultures.
Prepare students to compete in the global economy.

Prepare students to make informed choices at each point of their schooling.
Help students develop lively, enquiring minds and the ability to question and argue rationally.

Students will have high expectations for their behaviour and achievement

The school is inclusive and ambitious for all. We have high expectations of all students and provide opportunity for students to learn what is expected of them morally. Our Bramhall Way behaviour policy ensures that students learn that actions have consequences and they can accept and appreciate differences between people. Whilst students gain taught knowledge, we also want them to become learners who are enquiring, enthusiastic, engaged and mannerly. Students will develop high expectations of themselves.

Students will build their character

At the school, we are totally committed to improving the life chances and aspirations of students. We ensure students have access to a wider curriculum, which provides numerous opportunities in sport, creativity, performing, and world of work, volunteering and membership. An extensive enrichment programme supports the development of students into well-rounded citizens.

Music in its entirety

55 Sports Teams

Drama Clubs and Theatre Productions

The D of E Programme

A range of clubs including Science, Chess and Creative Writing

Overseas Visits: Battlefields; Berlin; Barcelona; Paris; Leysin (Switzerland), Madrid and Ski Trips.

School Trips. This year we have run over 30 trips in the UK including Geography and Drama Residential.

Community Links

Student Leadership opportunities.

Students will develop their cultural, moral, social, mental and physical development

At Bramhall high School, we pride ourselves on delivering a curriculum SkFL (Skills for Life). (SkFL) (SMSC) is championed at the school in order to develop students as a whole, not just academically, to ensure that they are fully prepared for life in modern Britain, students are able to envision 'The Bigger Picture' and show that learning is linked to the real world and experiences. Students are encouraged to take part in a range of sporting, cultural and charitable activities. Links with local and national business enrich the curriculum offer and help to contextualise learning.

Students will secure foundations for progression

It is our intention at the school to ensure students have secure foundations for progression into further education and apprenticeships. From Year 8, students receive careers information with a clear focus on the Gatsby benchmarks and this is supported through drop-down days and a focused careers event. Over the course of 5 years, students receive a rigorous and bespoke aspirations programme that exposes our students to a huge range of experiences. All students receive one to

one career guidance. Year 10 students undertake Work Experience. The Greater Manchester Challenge supports our Careers.

Curriculum Implementation

The school believes that a carefully planned and structured curriculum is the foundation upon which excellent learning and development is built. The curriculum is designed and implemented in such a way that it builds on prior knowledge and prepares students for the next stage in their education. Development of language and building knowledge are integral to curriculum planning. Subject Leaders, who are experts in their subjects, carefully construct a curriculum that promotes a deep understanding of a wide range of topics. Teachers plan learning that allows students to embed and recall knowledge through techniques such as interleaving of topics and spaced practice. This builds firm foundations for progression to the next level and exam success.

Year 7 8 and 9

At Year 7, 8 and 9 the curriculum is designed around a learning journey. It encourages students to focus on deeper learning to ensure real understanding of key concepts. Students study 13 different subjects ensuring a broad and balanced diet. All students study a Modern Foreign Language Spanish, German or French. We use a range of setting techniques to elicit the very best from our students and tailor our teaching to meet the needs of their learning. Our curriculum reflects academic rigour, whilst pastoral support is provided through our daily Core Tutor programme. Skills, knowledge and talents are built upon in with students acquiring a very clear understanding of their strengths, weaknesses and how these influences their progress.

All students in years 7 to 9 will student the separate sciences of Biology, Chemistry and Physics. A subject specific science specialist will teach each of these subjects. Classes are set in all subject areas.

Each Scheme of Learning has a planned learning journey with clear statements setting out what students need to know, understand and do to reach their aspirational target grade. The National curriculum content is carefully tracked to ensure that students have covered all areas 9 of subjects by the end of Year 9.

Year 10 and 11

Options are structured in such a way to allow students a free choice. This ensures equity of delivery, with all students having equal access to subjects. The options are designed to stretch and challenge students and to meet the demands of the local labour market. Students are offered a mixture of practical and academic subjects from all areas of the curriculum. Within the option subjects, the school offers a range of different accreditation routes including academic and vocational options. This gives every pupil a broad and balanced curriculum, but still offers a flexibility to maximise the outcomes achieved by each individual. This model also maintains the widest possible choice for progression routes Post 16 as every pupil will have a greater range of subjects on which to choose future opportunities for education and training.

The Recovery Programme

The government's document August 2020 itself states:

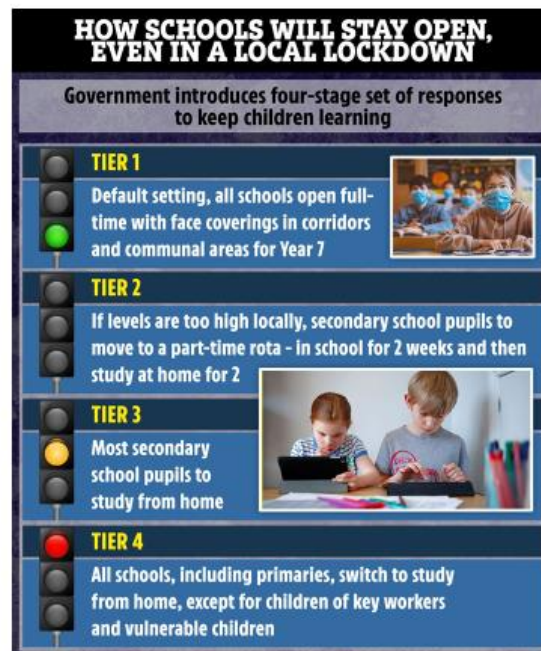
“Teach an ambitious and broad curriculum in all subjects from the start of the autumn term, but make use of existing flexibilities to create time to cover the most important missed content.”

It is vital that **we continue to embrace all subjects.** That we utilise our expertise and interventions do not become a circus. That we support students in their pastoral development and create the resilience for learning.

Heads of Departments have worked with their departments tirelessly to ensure that they have a clear plan to ensure that any missed learning is caught up. Learning journeys have been reassessed and work covered during the period of lockdown analysed.

Blended learning and Lockdowns

Types of Lockdown



A programme is in place to ensure in the event of another lockdown an online contingency plan is in place.

In the event of any form of lockdown, staff will follow their normal school timetable. Any remote timetable slot will include up to half an hour Microsoft Team session and then independent work for the remainder of the session. The Microsoft Team meeting will generate a Stream that can be shared if a student is unable to attend the actual session. For those students with limited access packs will be sent home.

Key Workers will be in Year bubbles and will follow the Microsoft Streamed lessons.

Partial Lockdown

School will be organised in to two groups. Two weeks in school, two weeks out to break transmission. DfE and PHE recommendation.

Week 1 and 2 Years 7 9 and 11

Week 3 and 4 Years 8 and 10.

Keyworker children will attend all weeks.

Bramhall High School